



ASK US ABOUT ENERGY!

23 STORES NATIONWIDE

MORE DEALS THAN EVER BEFORE GET INSTANT SAVINGS

**SINOTEC**

1C (Faster Charge & Discharge)  
 Fully Compatible With Conventional Inverters  
 Parallel Capability: Up To 4  
 Life Cycle: 3000+  
 Higher Power: Delivers Twice Power Of Lead Acid Battery, Even High Discharge Rate, While Maintaining High Energy Capacity  
 Superior Safety: Lithium-Ion Phosphate Chemistry Eliminates The Risk Of Explosion Or Combustion Due To High Impact, Overcharging Or Short Circuit  
 Wider Temperature Range: -20°C-60°C  
 Container Material: ABS  
 Warranty: 3 Years



**1.28KWH LITHIUM BATTERY**  
 12.8V/100AH

PRODUCT CODE: SBATSINO12100



**2.56KWH LITHIUM BATTERY**  
 12.8V/200AH

PRODUCT CODE: SBATSINO128200



**2.56KWH LITHIUM BATTERY**  
 25.6V/100AH

PRODUCT CODE: SBATSINO256100



Fully Compatible With Conventional Inverters  
 Life Cycle: 5 Years  
 Container Material: ABS  
 Warranty: 1 Year



**1.2KWH HYBRID GEL BATTERY**  
 12V/110AH

PRODUCT CODE: SBATSINO12110



**1.4KWH HYBRID GEL BATTERY**  
 12V/200AH

PRODUCT CODE: SBATSINO14200



**5KW/5KWH ALL-IN-ONE RESIDENTIAL ESS + WIFI STICK**

PRODUCT CODE: SSSYAI05KW



1C (Faster Charge & Discharge)

Battery: 51.2V/100AH

Battery Parallel Capability: Up To 4 (20.48kWh)

Inverter Parallel Capability: Up To 2 (10kW)

Advanced MPPT Technology Up To 99.9% Efficiency

Lithium Battery BMS Dual Activation

Up To 22A PV Input Current Perfect For High Power

High-Quality Pure Sine Wave AC Power  
 Supports Wall-Mounting & Floor-Mounting

Time-Slot Function To Save Cost With Peak-Valley

360 Degrees Of Security: Hardware To Software

Easy To Install & Simple To Use

Warranty: 5 Years (Inverter) + 10 Years (Battery)

1C (Faster Charge & Discharge)  
 Parallel Capability: Up To 16  
 Compatible Inverters: Victron / SMA Goodwe / Imeon / Solis / SAJ / Deye Growatt / Luxpower / Voltronic  
 Cycle Life: 6000+  
 Can Be Used In Both Off-Grid & Hybrid  
 Compact Size: Minimum Footprint  
 Built-In BMS: Charge & Discharge Protection  
 Warranty: 10 Years



**5.12KWH LITHIUM BATTERY**  
 51.2V/100AH

PRODUCT CODE: SBATSINO512100RM



**5.12KWH LITHIUM BATTERY**  
 51.2V/100AH

PRODUCT CODE: SBATSINO512100



**RITAR**

1C (Faster Charge & Discharge)  
 Parallel Capability: Up To 8  
 Compatible Inverters: Megarevo / Deye Sunsynk / Victron / Luxpower / Afore Solis / Voltronic / Inhenery / Growatt Epever / Phocos  
 Life Cycle: 6000+  
 IP20 Protection  
 Warranty: 10 Years



**2.56KWH LITHIUM BATTERY**  
 25.6V/100AH

PRODUCT CODE: RTBAT-R-LFP25.6V100AH



**5.12KWH LITHIUM BATTERY**  
 51.2V/100AH

PRODUCT CODE: RTBAT-R-LFP51.2V100AH



1C (Faster Charge & Discharge)  
 Bluetooth Enabled  
 Parallel Capability: Up To 15  
 Compatible Inverters: Megarevo / Deye Sunsynk / Victron / Luxpower / Afore Solis / Voltronic / Inhenery / Growatt Epever / Phocos  
 Life Cycle: 6000+  
 IP65 Protection: Outside Installation  
 Warranty: 10 Years



**5KWH LITHIUM BATTERY**  
 51.2V/100AH

PRODUCT CODE: RTBAT5KWH-WM



**10KWH LITHIUM BATTERY**  
 51.2V/200AH

PRODUCT CODE: RTBAT10KW-WM



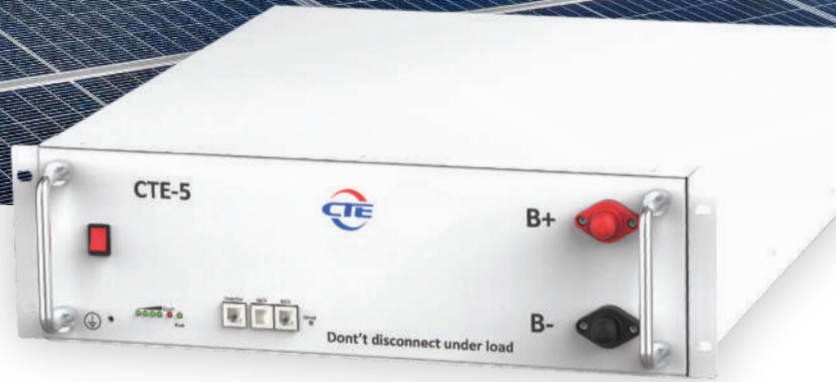
# 5.12KWH LITHIUM BATTERY 51.2V/100AH

Parallel Capability: Up To 8

Compatible Inverters: Sunsynk  
Sofar / Goodwe / Growatt / Deye  
Solplanet / Megarevo / SRNE / Solark  
Luxpower / Afore / Voltronic

Life Cycle: 6000+

Warranty: 10 Years



## KNYEE ENERGY

Plug & Play: Easy Installation

Stable & Reliable: Advanced BMS Management

Parallel Capability: Up To 15

Compatible Inverters: Deye / Sunsynk  
SRNE / Growatt / Luxpower  
Megarevo / Afore

Life Cycle: 6000+

IP20 Protection

Warranty: 10 Years



**4.8KWH  
LITHIUM BATTERY**  
48V/100AH

PRODUCT CODE:  
SBATKNYEE48100



**5.12KWH  
LITHIUM BATTERY**  
51.2V/100AH

PRODUCT CODE:  
SBATKNYEE512100

## FREEDOM WON

LiFePO4 Batteries: Perfect High-Quality Residential Solar Solutions

The E-Tower e5000: Designed To Stack Easily As A Tower. Specifically For Enabling Small Economical Storage Solutions That Can Be Upgraded Conveniently & Cost-Effectively Over Time. Start With 5kWh To Grow The Storage Capacity Over Time In 5kWh Increments Up To 20kWh

The Lite Home & Business Is Compatible With Most Inverters On The Market. Supports High Discharge & Charge Power: Batteries Can Be Charged In Shorter Time Due To High Charge Capability

Warranty: 10 Years



**5KWH  
LITHIUM BATTERY**  
52V/100AH

PRODUCT CODE:  
SBAFW5KW



**20KWH  
LITHIUM BATTERY**  
52V/400AH

PRODUCT CODE:  
SBAFW20KW

## SINOTEC

High Quality Pure Sine Wave AC Power

Battery Independent Design

Battery Equalization Function To Optimize Battery Performance & Extend Lifecycle

Reserved Communication Port For BMS Wide PV Input Range

Warranty: 2 Years



**3KW/3000W  
OFF-GRID  
INVERTER**

PRODUCT CODE:  
SINSINO3KW

Supports USB On-The-Go Function

Status Indication: 5" LCD + RGB Lights

Mobile Monitoring: Built-In Wi-Fi + App

High Quality Pure Sine Wave AC Power

Battery Parallel Capability: Up To 6

Battery Independent Design + Replaceable Fan Design (Easy Maintenance)

Two Independent AC Power Sources Connected & Switched Automatically

Adjustable Charging Current Setting For Two Different Power Sources

Warranty: 2 Years



**8KW/8000W  
OFF-GRID  
INVERTER**

PRODUCT CODE:  
SINSINO8KVA

**5KW/5000W  
OFF-GRID  
INVERTER**

PRODUCT CODE:  
SINSINO5KVA

**6KW/6000W  
SINGLE PHASE HYBRID  
INVERTER + WIFI STICK**

PRODUCT CODE:  
SINSINO6KW

**8KW/8000W  
SINGLE PHASE HYBRID  
INVERTER + WIFI STICK**

PRODUCT CODE:  
SINSINO8KW

High Quality Pure Sine Wave AC Power

Dual MPPT Technology Maximizes The Power Output Of Solar Panels

IP65 Protection: Outside Installation

EU & North American Safety Approvals

Time-Slot Function To Save Cost With Peak Valley

Exclusive Lithium-Ion Battery BMS Dual Activation

Solar Charger Controller Up To 100A Charging Current

Easy To Install & Simple To Use

Warranty: 5 Years



## DEYE

Colourful Touch LCD

Wi-Fi Ready

Diesel Generator Connection Supported

Battery Parallel Capability: Up To 16

On-Grid & Off-Grid Operation

Max Charging/Discharging Current: 190A

6 Time Periods: Battery Charging/Discharging

Remote Monitoring & Changing Parameter Via App

Self-Adaption To BMS

Auto On/Off Grid Switching Function - Ensures Uninterrupted Power

IP65 Protection: Outside Installation

Equipped With 2 MPPT Trackers

Warranty: 5 Years



**5KW/5000W  
SINGLE PHASE HYBRID  
INVERTER + WIFI STICK**

PRODUCT CODE:  
SINDEYE5KW



**8KW/8000W  
SINGLE PHASE HYBRID  
INVERTER + WIFI STICK**

PRODUCT CODE:  
SINDEYE8KW

**MEGAREVO**

- Friendly & Flexible: Supports Multi Machine Parallel Connection
- Compatible Battery Connections: (Lead-Acid & Lithium-Ion Batteries)
- Efficient: Maximum  $\geq 98\%$
- Optimized Volume & Weight: Compact Design & Lightweight
- Soft Switching Technology: Overall Machine Efficiency Is Increased By 0.5%
- Supports AC Coupling Function
- Supports Mobile Phone: Bluetooth + WI-FI
- Ultra-Low Starting Voltage: Longer Power Generation Time



**5KW/5000W SINGLE PHASE HYBRID INVERTER**

PRODUCT CODE: RAYST-INVERTER5KVA

**8KW/8000W SINGLE PHASE HYBRID INVERTER**

PRODUCT CODE: RAYST-INVERTER8KVA

**8KW/8000W SINGLE PHASE HYBRID INVERTER**

PRODUCT CODE: SINVMEGA8KW-DIESEL

- Supports WIFI, GPRS, 4G & APP
- Friendly & Flexible: Supports Diesel Generator Connection, Parallel Function & 4 MPPT Trackers
- Safe & Reliable: Complete Functional Protection Measures
- Intelligent & Efficient: Max Charging/Discharging Current Up To 250A
- LCD, Touch Panel, Multiple Working Modes (Optional)



**12KW/12000W SINGLE PHASE HYBRID INVERTER**

PRODUCT CODE: SINMEGA12KW

- Compatible: Single-Phase, Three-Phase & Unbalanced Loads
- Flexible Configuration: Supports PV, Diesel Generator, Battery, Load At The Same Time Access, Strong Adaptability & Supports Black Start
- Economical & Practical: Supports Multiple Operating Modes
- Can Be As A UPS: For Important Loads When Power Is Off
- Supports BMS (Non-Standard) Remote Upgrade
- Supports Full Power Discharge, Automatic Battery Charge & Discharge Management



**LIVOLTEK**



ELEGANT & COMPACT DESIGN

**5KW/5KWH ALL-IN-ONE RESIDENTIAL ESS**

PRODUCT CODE: SSYLT5KW

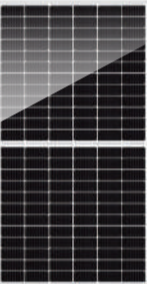
- Hybrid Inverter & Low-Voltage Battery
- Free Online Monitoring Enabled
- Plug & Play Installation
- Lithium Battery 51.2V
- Flexible & Easy Expansion/Storage
- Capacity Up To 25kWh (5 Modules)
- Extremely Quiet
- Smart & Easy Operation
- Warranty: 5 Years

**TONGWEI SOLAR**

**410W MONO FACIAL MODULE SOLAR PANEL**

PRODUCT CODE: SPATW410

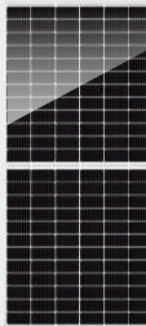
- Tier 1: Bloomberg New Energy Finance
- Cell Type: P Type Mono-Crystalline
- Equipped With 108 Cells
- Multi Busbar Technology- Better Light Trapping & Current Collection To Improve Module Power Output & Reliability
- High Power Output Low LCOE
- High Reliability & Low LID
- Materials Warranty: 25 Years
- Linear Power Output Warranty: 25 Years



**550W MONO FACIAL MODULE SOLAR PANEL**

PRODUCT CODE: SPATW550

- Tier 1: Bloomberg New Energy Finance
- Type: P-Type Half-Cell, PERC, Half Cell, Bi-Facial, All Black, N-TYPE, TOPCON
- Equipped With 144 Cells
- High Power Output Low LCOE
- High Reliability & Low LID
- Product Warranty: 12 Years
- Linear Power Output Warranty: 25 Years

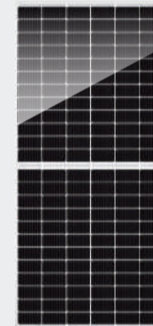


**JINKO**

**550W MONO FACIAL MODULE SOLAR PANEL**

PRODUCT CODE: SPAJK550

- Tier 1: Bloomberg New Energy Finance
- Cell Type: P Type Mono-Crystalline
- Equipped With 144 Cells
- Multi Busbar Technology- Better Light Trapping & Current Collection To Improve Module Power Output & Reliability
- Reduced Hot Spot Loss - Better Temperature Coefficient
- Product Warranty: 12 Years
- Linear Power Output Warranty: 25 Years



**SINOTEC**

**100KW/200KWH ALL-IN-ONE COMMERCIAL ESS**

PRODUCT CODE: SSYSAIO100KW

- Micro Grid Solution
- Monitoring: Intelligent Cloud Based Capabilities
- All-In-One: Simple Design & Easy Installation
- Scalable: Flexible & Easily Expanded
- Grid Compatibility: Supports Both On & Off-Grid Operations
- Ideal For Small Factories, Hospitals, Warehouses & Supermarkets

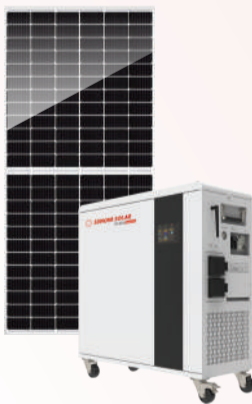


**COMBO DEAL 1**

**5KW/5KWH TROLLEY INVERTER + x 6 SOLAR PANELS**

PRODUCT CODE: STROINV5KW + SPATW550

- Sunova Off-Grid Inverter & Battery Management System (BMS)
- Built-In Lithium Battery (51.2V)
- 1C (Faster Charge & Discharge)
- Battery Life Cycle: 6000+
- 6 x 550W Tongwei Solar Panels
- Connects Solar Panel, Grid Or Generator
- AC Socket + 2 Terminals
- Easy To Install & Move (Pickup & Go)

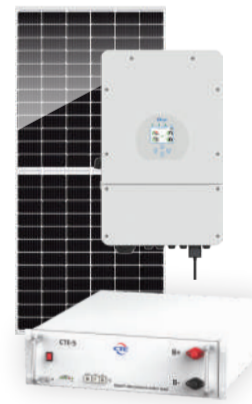


**COMBO DEAL 2**

**5KW/5KWH INVERTER + LITHIUM BATTERY + x 10 SOLAR PANELS**

PRODUCT CODE: SINDEYE5KW + SBATTE5KW + SPAJK550

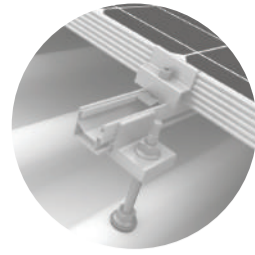
- 1 x 5KW Deye Single Phase Hybrid Inverter Warranty: 10 Years
- 1 x 5.12KWH CTE Lithium Battery 51.2V/100AH Warranty: 10 Years
- 10 x Jinko 550W Solar Panels Mono-Facial Module Product Warranty: 12 Years Linear Power Output Warranty: 25 Years



Our mounting systems are designed for corrugated, IBR & tile roofs.

All conveniently packed for you in 5 easy kits. Making your solar journey hassle free!

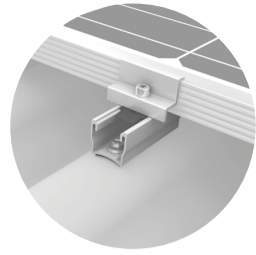
Developed in Germany & constantly tested according to strict performance criteria.



**HANGERBOLT KIT  
CORRUGATED ROOF  
MOUNTS x 4 PANELS  
(LANDSCAPE)**

**PRODUCT CODE:**  
SMK2HANBOLTKIT

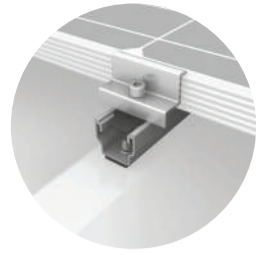
- Included In Kit Box:**  
 (x7) Hangerbolt M10x200  
 (x2) K2 Solid Rail Ultra Light 4.40m  
 (x6) K2 One Mid 30-42mm  
 (x4) K2 One End 30-42mm  
 (x4) K2 Solar Cable Management  
 (x7) Adapterplate M10  
 (x7) T-Head Bolt 28/15 M10x30  
 (x7) Hexagon Flange Nut With Serration M10 DIN6923



**MULTIRAIL CSM KIT  
CORRUGATED ROOF  
MOUNTS x 4 PANELS  
(LANDSCAPE)**

**PRODUCT CODE:**  
SMK2MRCSMKIT

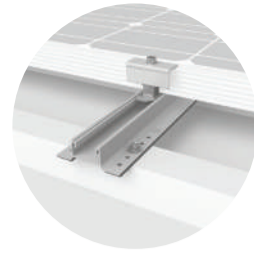
- Included In Kit Box:**  
 (x12) Multi Rail CSM 10  
 (x12) Rail Up Set  
 (x4) K2 One Mid 30-42mm  
 (x8) K2 One End 30-42mm  
 (x24) Thin Sheet Screws 6x25



**MULTIRAIL KIT  
IBR ROOF  
MOUNTS x 4 PANELS  
(LANDSCAPE)**

**PRODUCT CODE:**  
SMK2MULTIRLKIT

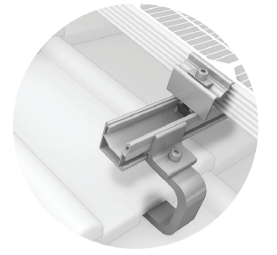
- Included In Kit Box:**  
 (x12) Multi Rail 10  
 (x4) K2 One Mid 30-42mm  
 (x8) K2 One End 30-42mm  
 (x24) Thin Sheet Screws 6x25



**MINIRAIL MK2 KIT  
IBR ROOF  
MOUNTS x 4 PANELS  
(PORTRAIT)**

**PRODUCT CODE:**  
SMK2MRMK2KIT

- Included In Kit Box:**  
 (x10) Mini Rail MK2 Set  
 (x4) K2 Solar Cable Management  
 (x6) K2 One Mid 30-42mm  
 (x4) K2 One End 30-42mm



**VARIO 2 KIT  
TILE ROOF  
MOUNTS x 4 PANELS  
(PORTRAIT)**

**PRODUCT CODE:**  
SMK2VARIO2KIT

- Included In Kit Box:**  
 (x9) Solid Hook Vario 2  
 (x3) K2 Solid Rail Ultra Light 32; 4.4m  
 (x6) K2 One Mid 30-42mm  
 (x4) K2 One End 30-42mm  
 (x2) Solid Rail UL+L Rail Connector  
 (x18) Heco Topix Wood Screw 8x100  
 (x9) T-Head Bolt 28/15 M10x30  
 (x9) Hexagon Flange Nut With Serration M10 DIN6923

**SINGLE PHASE  
SURGE PROTECTION**

**PRODUCT CODE:**  
1814200371

- RayDin 50KA Single Phase SPD
- Raydin 240V-TI-HV-FL
- Contactor.Rab-60T11.230 Volt (22KW)
- CB DIN 63A 2P 3KA C-Curve
- Voltage Window Comparator 1PH
- Steel Enclosure 300 x 250 x 200 Orange



**THREE PHASE  
SURGE PROTECTION**

**PRODUCT CODE:**  
1814200464

- RayDin 50KA Three Phase SPD
- Raydin 400V-TI-HV-ALR
- Contactor.Rab-60T11.400 Volt Coil
- CB DIN 63A 3P 3KA C-Curve
- Phase Failure/Sequince + O/U Volt Relay
- Steel Enclosure 400 x 300 x 200 Orange



These surge protectors are an excellent defence against power surges, dips, and spikes especially when the power comes back after load shedding. They're also a great insurance asset, firstly reducing the frequency of claims and also helping to avoid claim repudiation as this item is usually required by insurers when settling a claim.

Manufactured in Drama - Greece, to handle multiple major and minor surges and are classified as non-sacrificial products. They honour a 10-year replacement warranty and have a 1 nanosecond reaction time to your common conventional products which only have a 25 - 100 nanosecond reaction time with no warranty.

**AC COMBINER  
BOX**



**PRODUCT CODE:**  
SETEAC12LSC

Inverter In & Out AC Combiner Box + Earth Leakage & Surge Protection + Mains Change Over

**PRODUCT CODE:**  
SETEAC12LS

Inverter In & Out AC Combiner Box + Earth Leakage & Surge Protection

**DC COMBINER  
BOX**



**PRODUCT CODE:**  
SETEDC11S

1-1 String PV Combiner Box (1 In & 1 Out)

**PRODUCT CODE:**  
SETEDC21S

2-1 String PV Combiner Box (2 In & 1 Out)

**PRODUCT CODE:**  
SETEDC22S

2-2 String PV Combiner Box (2 In & 2 Out)

| PRODUCT CODE | DESCRIPTION                            | PRODUCT CODE | DESCRIPTION       |
|--------------|--|--------------|-------------------|
| SSPVCAB6B    | PV DC CABLE 6MM BLACK 100M ROLL        | SEFL80A      | FUSE LINK 80A     |
| SSPVCAB6R    | PV DC CABLE 6MM RED 100M ROLL          | SEFL100A     | FUSE LINK 100A    |
| SSPVCAB6YG   | PV DC CABLE 6MM YELLOW/GREEN 100M ROLL | SEFL125A     | FUSE LINK 125A    |
| SEFDDC250    | FUSE SWITCH DISCONNECTOR DC 250A       | SEFL160A     | FUSE LINK 160A    |
| SEFDDC160    | FUSE SWITCH DISCONNECTOR DC 160A       | SEFL250A     | FUSE LINK 250A    |
| SEMC4F       | DC CONNECTOR MC4 FEMALE                | SEDCF20A     | DC FUSE 20A 1000V |
| SEMC4M       | DC CONNECTOR MC4 MALE                  | SEDCF32A     | DC FUSE 32A 1000V |
| SEFHDC1038   | DC FUSE HOLDER SRD 10x38               |              |                   |

